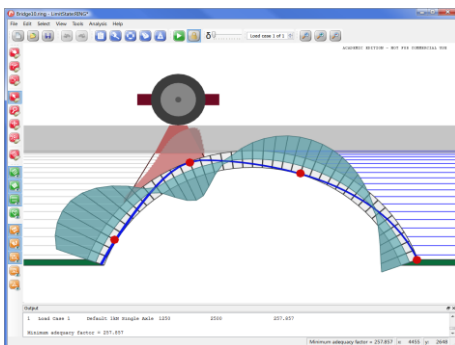
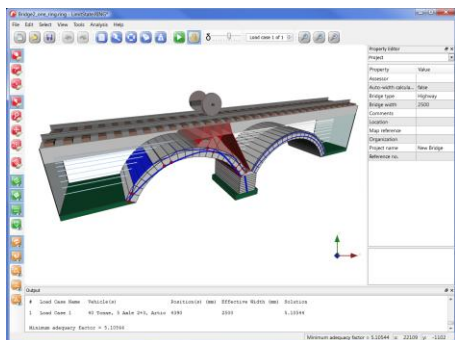


Model a wide range of arch profile types with LimitState:RING 3.0



View moment, shear and normal force diagrams for the analysed structure



The upgraded solver is faster and solves a wider range of problem geometries

Benefits over Version 2.0

LimitState:RING 3.0 is the latest version of the highly successful RING software for the analysis of masonry arch bridges and constitutes a major leap forward from LimitState:RING 2.0:

Analysis Engine

- **More robust** - gives a solution for a wider range of problem geometries
- **More efficient** - solve most problems in a fraction of the time

Functionality

- More **flexible arch profile definition** allows users to more closely model the shape of an arch
- **Moment, shear and normal force diagrams** for the analysed structure help the engineer gain an even better understanding of the mode of response
- The ability to **model reinforcement** opens up the possibility of assessing a range of reinforced masonry or concrete arch bridges

User Interface

- A more **modern user interface**
- **Improved loading dialogs** help the user to set up their model even quicker than before
- **Improved rendering engine** provides a clearer view of the model
- **Additional output information**, including the calculated effective bridge width

Convenience

- An **expanded vehicle database** includes more industry standard highway and railway vehicles
- An **improved report output** includes extra problem data and a clearer layout
- **Cut and paste** arch profile and surface level data to and from a spreadsheet (e.g. Excel)

Support

- All LimitState software is fully supported by a team of engineers and software experts.