

# Masonry Arch Bridge Future Research Symposium

## Start

The symposium will begin with refreshments at 9:30am for a 10:00am start.

## Venue

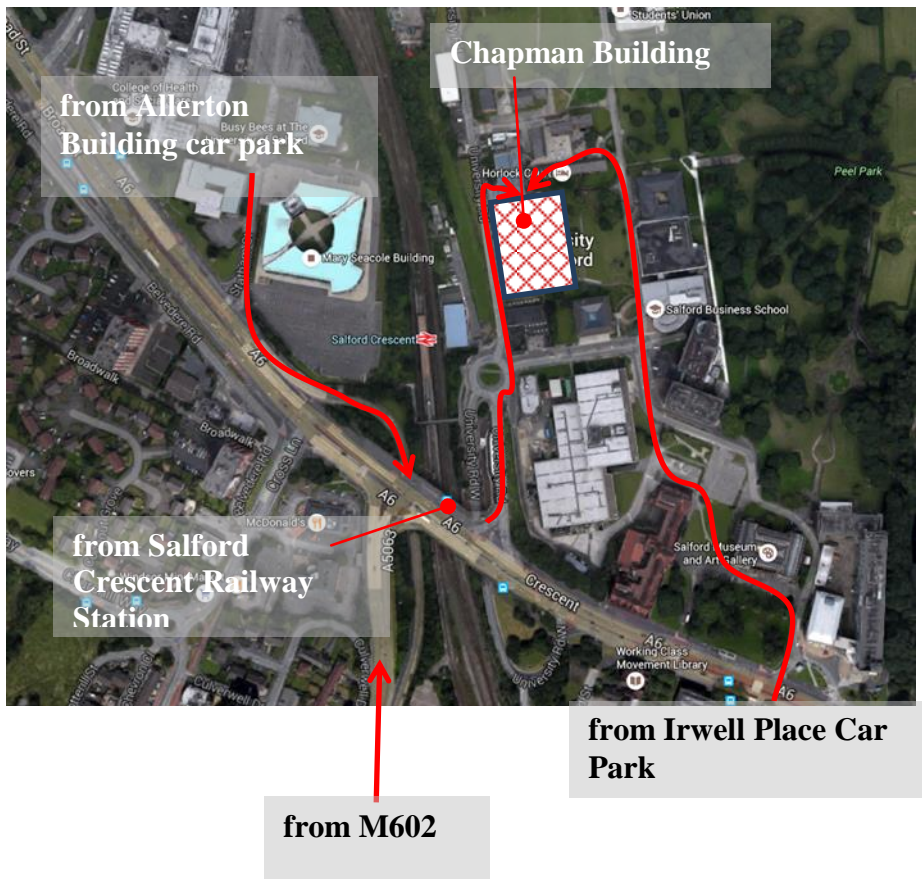
The symposium will be held in the Chapman Building at the University of Salford, on Wednesday 6<sup>th</sup> April 2016.

Salford Crescent railway station is five minutes walk from the venue.

The university campus is 600m from the end of the M602, with car parking available adjacent to Faraday House and the Allerton Building. A campus map is available at

<http://www.salford.ac.uk/about-us/travel/campus-map/map-low-res-2.pdf>

Signposting will be provided from the car parks and railway station to the Chapman Building.



Symposium sponsors